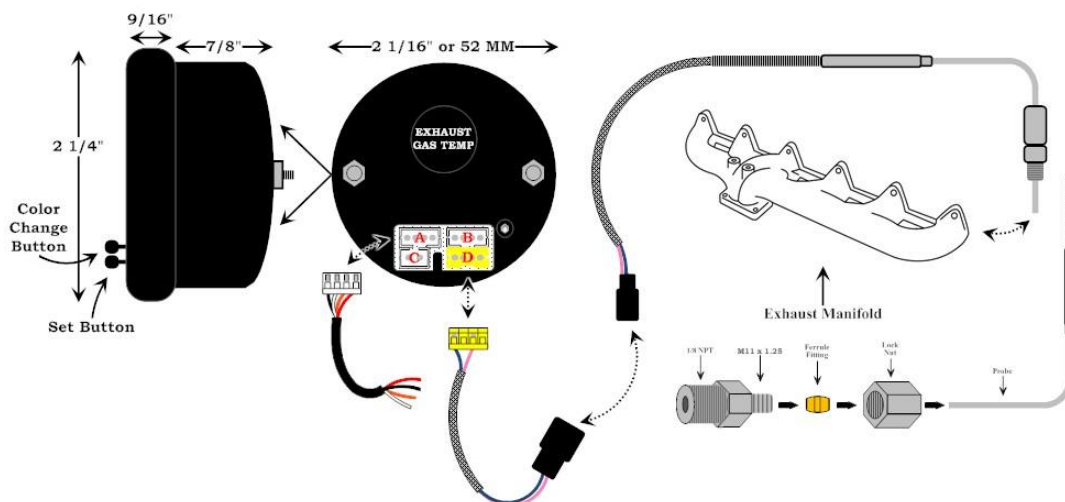


Elite 10 Color Pyrometer EGT Gauge

For Product Numbers: GS-ET08_1500, GS-ET08_2200, GS-EWT08_1500 and GE-EWT08_2200



Wire Harness Color Code

Red:	12v Constant (un-switched) Source (+)	Black:	Vehicle / Engine Ground (-)
White:	12v Ignition (switched) Source (+)	Orange:	12v Dimmer (switched) Source (+) (optional)

1. Disconnect the negative battery cable.
2. There are two common types of EGT probe installations. We recommend installing the probe pre-turbo for the most accurate reading.
 - **Exhaust Manifold:** Drill and tap the exhaust manifold to 1/8-27 NPT. Install the supplied EGT probe directly into your exhaust manifold.
 - **Note:** After drilling and tapping your exhaust manifold, be sure to use both a magnet and vacuum to safely remove all shavings from the manifold.
 - **Exhaust Temperature Bracket:** This method is not shown, but you may purchase an exhaust temperature bracket from GlowShift.com. This adapter is clamped and tightened around the exhaust pipe and provides a 1/8-27 NPT fitting for an EGT probe. Using a 3/16 drill bit, drill a hole in your exhaust pipe. Position and tighten the adapter clamp, then mount the probe through the fitting and into the exhaust pipe.
3. Route the sensor connector from the back of the gauge (**port D**) through the firewall into the engine bay. Next, plug the female end of the connector to the male end of the EGT probe until fully seated. Be sure to use a rubber grommet when routing any wiring through the firewall to protect them from being cut or damaged.
4. Connect the **white wire** to a positive 12 volt ignition (switched) source. It may be connected to the fuse panel, an accessory wire, or any positive 12 volt source that turns on and off with the ignition switch of the vehicle.
 - **Note:** If wiring to an un-fused source, install a 3 amp fuse inline within 20 inches of the sources connection. You may use an optional “expandable circuit” accessory. This component easily fits into the fuse panel and provides an additional fused power wire for accessories such as gauges. This is available at GlowShift.com or a local auto parts store.
5. Connect the **red wire** to a positive 12 volt constant (un-switched) source, either directly to the battery or to a fuse panel on the vehicle.
 - **Note:** If wiring to an un-fused source, install a 3 amp fuse inline within 20 inches of the sources connection. You may use an optional “expandable circuit” accessory. This component easily fits into the fuse panel and provides an additional fused power wire for accessories such as gauges. This is available at GlowShift.com or a local auto parts store.
6. The Nighttime Dimming feature decreases the brightness of the gauge face by 30%. Connect the **orange wire** to the 12 volt positive headlamp source. This allows the mode to be activated when the headlights come on. This step is optional and will not affect operation of the gauge if it is omitted.
 - **Note: Do not connect the orange wire to a dimmer wheel. This will cause the gauge lighting to flicker.**
7. Connect the **black wire** from the gauge, to any good (unpainted) ground connection. You may also route a wire directly to the negative side of the vehicle’s battery.
8. Reconnect the negative battery cable.
9. **Daisy Chain Feature (Optional):** If you are installing more than one Elite 10 Color Gauge, you can use the daisy chain feature to power up to 4 additional gauges. Simply plug the included daisy chain wire into the gauge that is already powered (**port B**); then plug the other end of the wire into the daisy chain port on the next gauge.

Operating Instructions

1. 10 Color Mode:

1. Press the **COLOR** button to cycle between the 10 different color options.
2. The sequence of display colors are: Blue, Green, Red, Yellow, White, Light Blue, Purple, Pink, Orange, Amber. After Amber there are 2 automatic color changing functions on the gauge that begin with the color Blue. They are the 10 Color Cycle Mode and the 10 Color Slow Fade Mode.

2. Setting the Peak Recall:

1. Press the **SET** button on the front of the gauge to recall your last peak value and enter into the peak setting mode. The word **PEAK** will turn blue when you are in the peak recall setting mode.
2. Once the peak value is displayed, press the **COLOR** button to clear the previous peak value. When the Peak Blue LED is not flashing, the gauge is operating in normal mode.

3. Setting the High-Warning Mode:

1. Press and hold the **COLOR** button for 5 seconds to enter the high-warning setting mode.
2. When the needle is flashing and the warning light is on, you can now program the high-warning mode value. Pressing the **COLOR** button will move the needle clockwise, while pressing the **SET** button will move the needle counter-clockwise.
3. Holding either the **COLOR** button or the **SET** button will move the needle in major increments in the buttons respective direction.
4. After 5 seconds of no button activity, the gauge will return to its normal operating mode.
5. To turn the warning sound on for this mode, turn the gauge off. While holding the **COLOR** button, turn on the gauge until you hear a single beeping sound. Repeat to turn off.

4. Low-Warning Mode:

1. Hold the **SET** button for 5 seconds to enter into the low-warning setting mode.
2. When the needle and warning lights are flashing, you can now program the low-warning mode value. Pressing the **COLOR** button will move the needle clockwise, while pressing the **SET** button will move the needle counter-clockwise.
3. Holding either the **COLOR** button or the **SET** button will move the needle in major increments in the buttons respective direction.
4. After 5 seconds of no button activity, the gauge will return to its normal operating mode.
5. To turn the warning sound on for this mode, turn the gauge off. While holding the **SET** button, turn on the gauge until you hear a single beeping sound. Repeat to turn off.

5. Key Sound Mode:

1. To hear the key sound when either button is pressed, turn the gauge off.
2. Hold the **COLOR** and **SET** buttons at the same time and then turn on the gauge until you hear two beeping sounds. The key sound mode is now activated.
3. Hold the **COLOR** and **SET** buttons at the same time and then turning off the gauge will deactivate this setting.

Additional Installation Information & Material Requirements

- **GlowShift Gauges Approved Conductor Wires:** Successfully installing GlowShift Gauges may require lengths of wire (sizes and quantity depend on vehicle, gauge type, gauge location and / or sensor location). For correct and proper GlowShift Gauge installation and operation, the use of 18 Gauge (wire diameter) automotive grade conductor wire with sheathing is recommended for one or more gauges per vehicle. When installing and routing wires from the engine compartment, to inside the vehicle cabin, always employ the use of a rubber grommet. This will prevent and deter the stripping of power supply and / or sensor wires that is necessary to deliver vital statistics about your engine to your GlowShift engine monitoring instruments. Never use wire nuts to fasten or bound vehicle / gauge or sensor wiring. Always use securing crimp connectors or solder individual wire junctions together for optimum gauge installation and operation.
- **GlowShift Gauges Approved Installation Accessories:** GlowShift Gauges may require the installer or user to provide additional products, accessories or adapters for the correct installation and operation of a gauge or sensor, as per the GlowShift Installation Instructions. When installing and routing hoses to or from the engine compartment, to inside the vehicle cabin, always employ the use of a rubber grommet. This will prevent and deter the stretching or pinching of hoses that is necessary to deliver vital statistics about your engine to your GlowShift engine monitoring instruments.
- **GlowShift Gauges Installation Instructions:** Installation documents are solely to provide a guide for individuals that are mechanically and electronically able to install products. If you are unsure about the correct procedure of installation for a product or device, you should consult a professional mechanic or an Authorized GlowShift Installer.