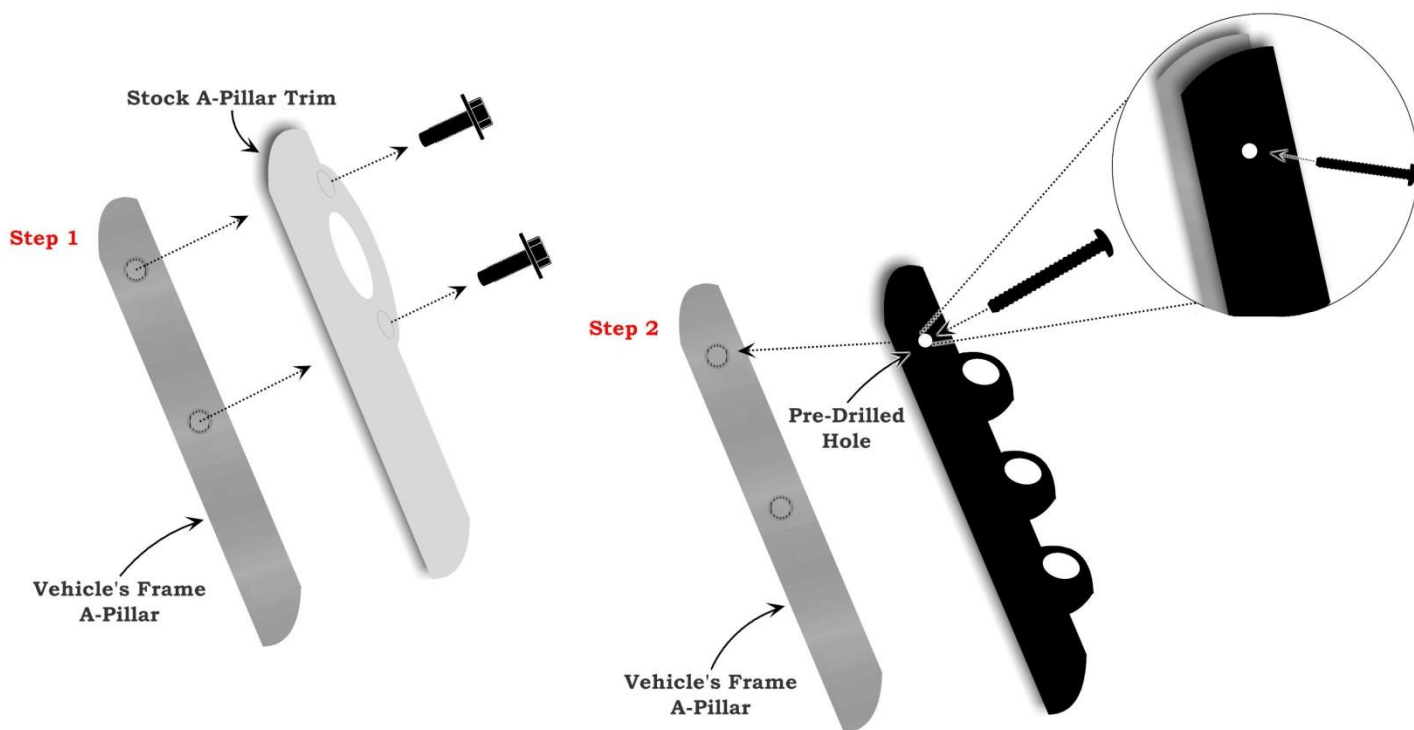


2011-2016 Ford Super Duty Triple Pillar Gauge Pod



- 1. Prior to installing this full size gauge pod, be sure that your truck does not have side curtain air bags.**
- 2. This gauge pod is a complete replacement and you will have to remove your factory trim with grab handle. We strongly recommend referring to your owner's manual for the proper procedure on removing this piece.**
- 3. Remove the 2 bolts located above and below the grab handle using a 7mm socket wrench.**
- 4. Carefully remove the factory A-pillar trim from the truck. Be sure to store the factory A-pillar trim in a safe location.**
- 5. Install your gauges into the pod by following the instructions that are included with them.**
- 6. Install the gauge pod to the factory A-pillar frame using the included M8 x 0.8 bolt. This bolt installs directly into the top thread that the factory A-pillar trim screws into. The included bolt is 20mm in length.**
- 7. To ensure a proper fit, screw the bolt into the threads, but do not tighten completely. Adjust the gauge pod so that it lines up correctly and then tighten the bolt using a 3mm Allen wrench.**